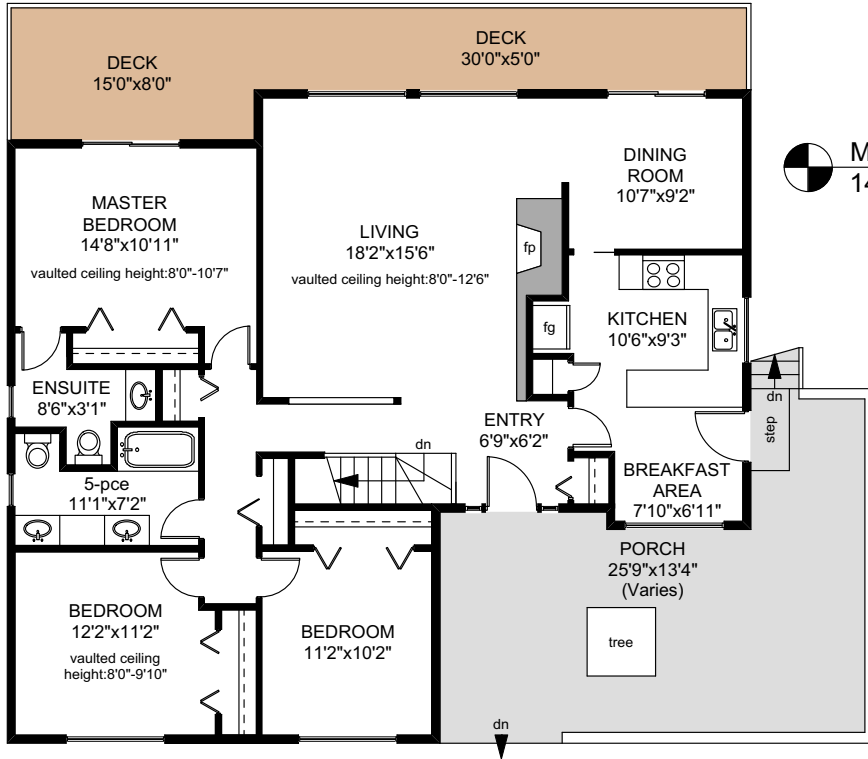
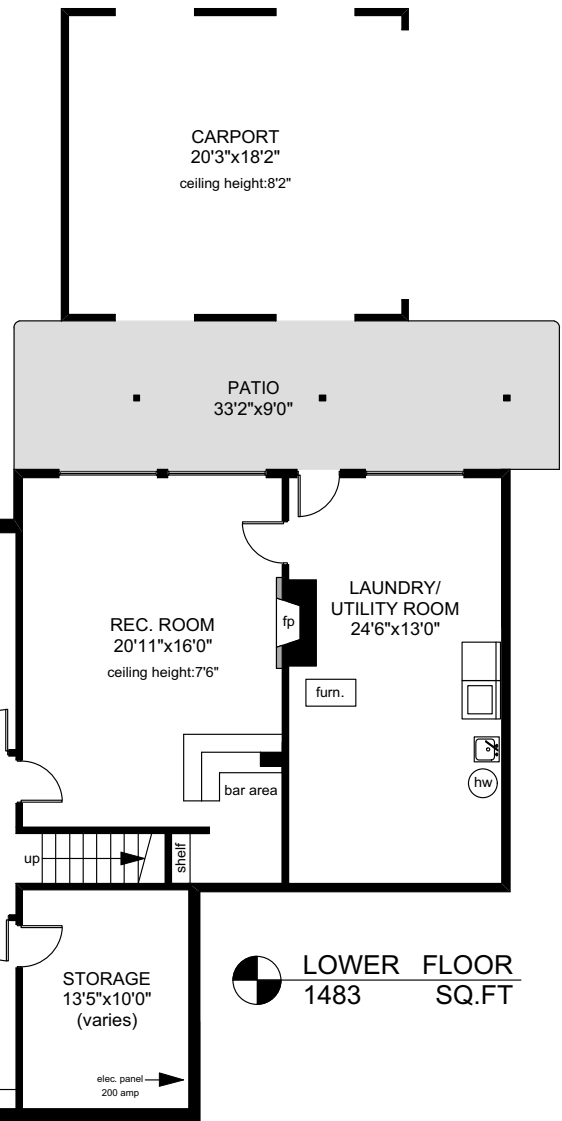


4285 CEDAR HILL ROAD

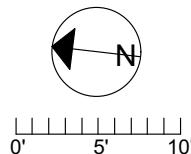


MAIN FLOOR
1492 SQ.FT



LOWER FLOOR
1483 SQ.FT

	FINISHED SQ. FT.	UNFINISHED SQ. FT.	TOTAL SQ. FT.
MAIN	1492	0	1492
LOWER	976	507	1483
TOTAL	2468	507	2975
CARPORT	0	401	401
PORCH	0	361	361
DECK	0	268	268
PATIO	0	298	298



PREPARED FOR THE EXCLUSIVE USE OF
BLAIR ROBERTSON OF RE/MAX CAMOSUN

MEASURED ON: 04/18/17
DRAWING FILE: 13842

Tafe Measure VICTORIA, B.C.
Ph. 883.8894
www.tafemeasure.com